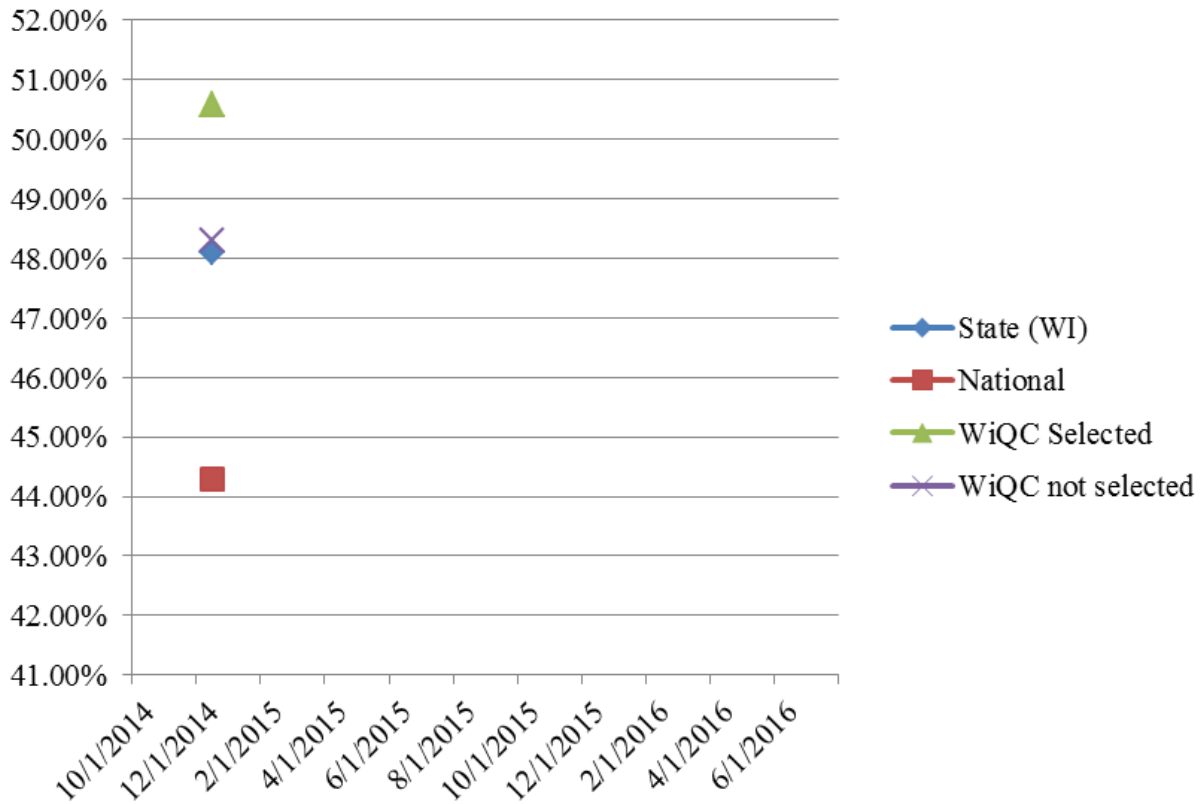


Falls (L) Benchmarks



Date	State (WI)	National	WiQC Selected	WiQC not selected
10/31/2014				
11/30/2014				
12/31/2014	48.10%	44.30%	50.58%	48.31%

Description: This measure reports the percent of long-stay residents who have experienced one or more falls with major injury reported in the target period.

Numerator- Long-stay residents with one or more look back scan MDS assessments that indicate one or more falls that resulted in major injury.

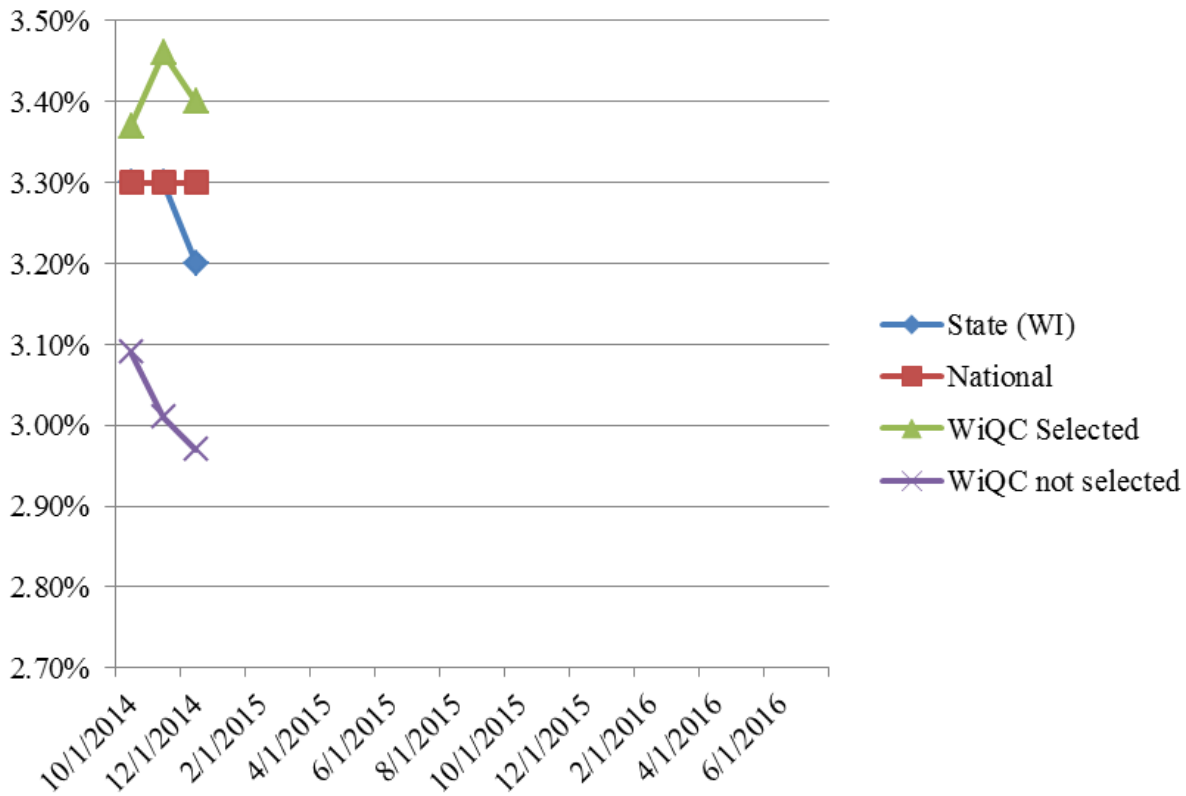
Denominator- All long-stay nursing home residents with one or more look back scans of MDS assessments except those with exclusions.

State- Data Source is CASPER REPORT

National- Data source is CASPER REPORT

WiQC - Data source are CASPER reports and this group represents the WiQC members.

Falls with Injury Benchmarks



Date	State (WI)	National	WiQC Selected	WiQC not selected
10/31/2014	3.30%	3.30%	3.37%	3.09%
11/30/2014	3.30%	3.30%	3.46%	3.01%
12/31/2014	3.20%	3.30%	3.40%	2.97%

Description: This measure reports the percent of long-stay residents who have experienced one or more falls with major injury reported in the target period.

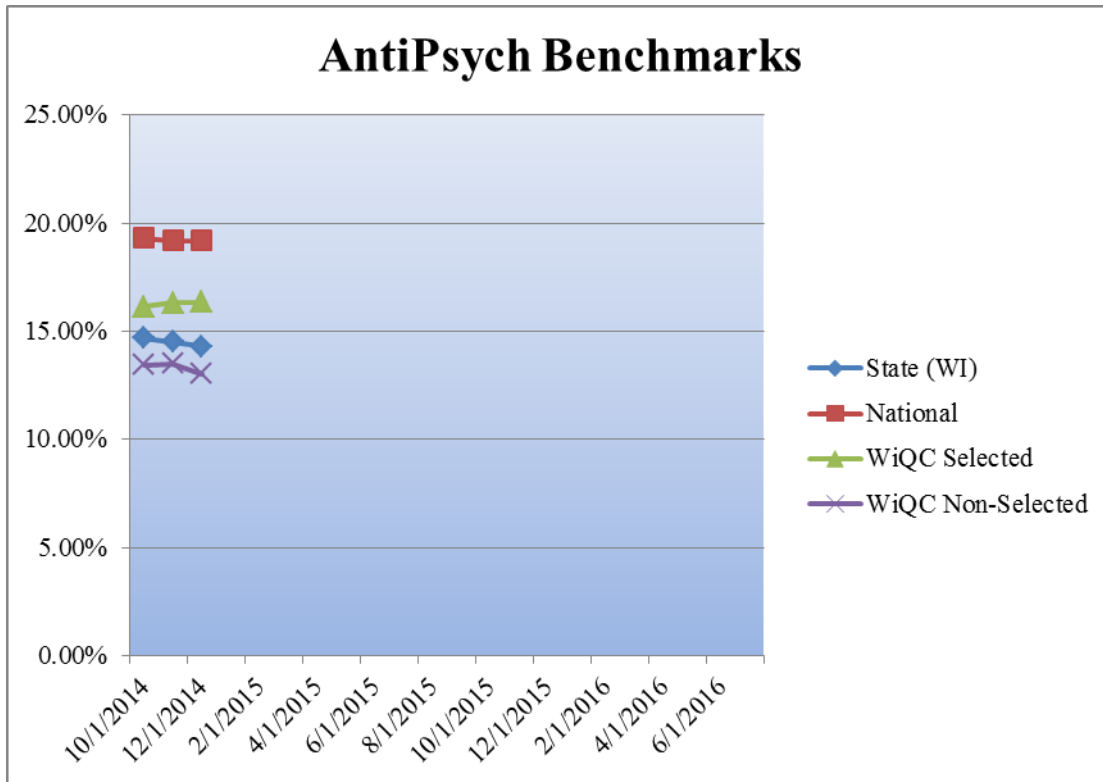
Numerator- Long-stay residents with one or more look back scan MDS assessments that indicate one or more falls that resulted in major injury.

Denominator- All long-stay nursing home residents with one or more look back scans of MDS assessments except those with exclusions.

State- Data Source is CASPER REPORT

National- Data source is CASPER REPORT

WiQC - Data source are CASPER reports and this group represents the WiQC members.



Date	State (WI)	National	WiQC Selected	WiQC Non-Selected
10/31/2014	14.70%	19.30%	16.15%	13.45%
11/30/2014	14.50%	19.20%	16.33%	13.49%
12/31/2014	14.30%	19.20%	16.36%	13.02%

Description: This measure reports the percentage of long-stay residents who are receiving antipsychotic drugs in the target period (Definition per MDS 3.0 per v8.0 04-15-2013).

Numerator- Long-stay residents with a selected target MDS assessment where the following condition is true: antipsychotic medications received.

Denominator- Long-stay nursing home residents with a selected target MDS assessment, except those with exclusions.

State- Data Source is CASPER REPORT

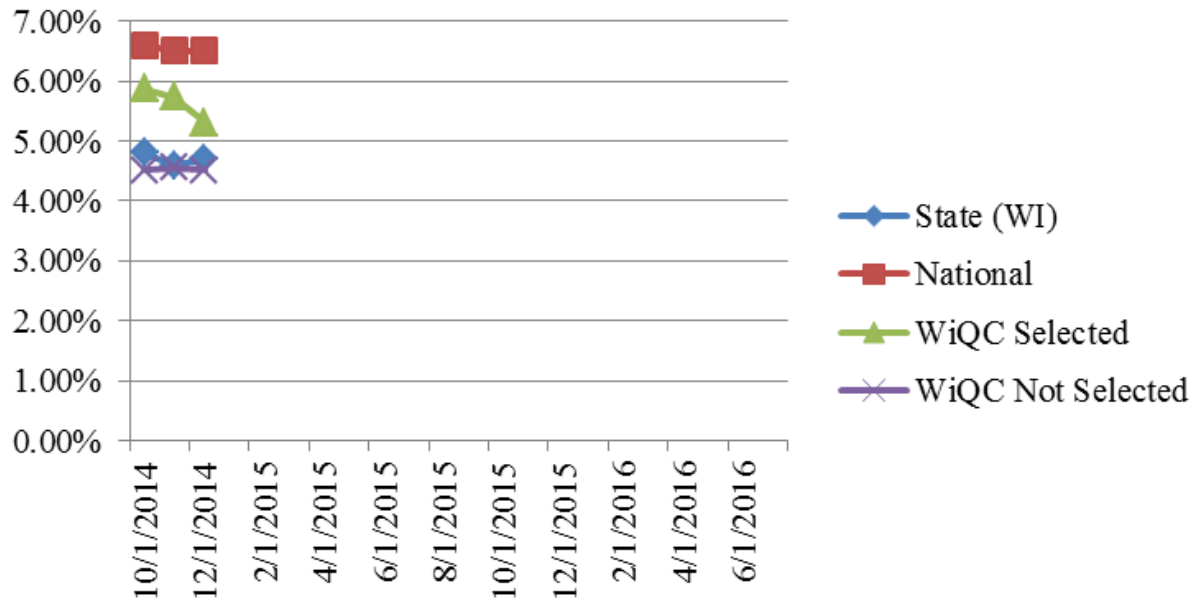
National- Data source is CASPER REPORT

WiQC (Not Selected) - Data source are CASPER reports and this group represents the WiQC members that did not select antipsychotic medication as a focus in their facility.

WiQC Selected- Data source are CASPER reports and this group represents the WiQC members that did select antipsychotic medication as a focus in their facility.

*Note- MDS changed the criteria for Antipsychotic Medication starting in February 2013. Long term and short term stay were separated. This is reflected above.

Pressure Ulcer Benchmarks



Date	State (WI)	National	WiQC Selected	WiQC Not Selected
10/31/2014	4.80%	6.60%	5.88%	4.51%
11/30/2014	4.60%	6.50%	5.74%	4.55%
12/31/2014	4.70%	6.50%	5.31%	4.52%

Description: This measure reports the percent of long-stay, high-risk residents with stage II-IV pressure ulcers.

Numerator- Long-stay residents with a selected target MDS assessment that meets both of the following conditions: 1. Condition #1: There is a high risk for pressure ulcers and 'high-risk' is defined in the denominator definition below. 2. Condition #2: Stage II-IV pressure ulcers are present as indicated by coding per the MDS.

Denominator- Long-stay nursing home residents with a selected target MDS assessment who meets the definition of high risk, except those with exclusions. Residents are defined as high-risk per the MDS.

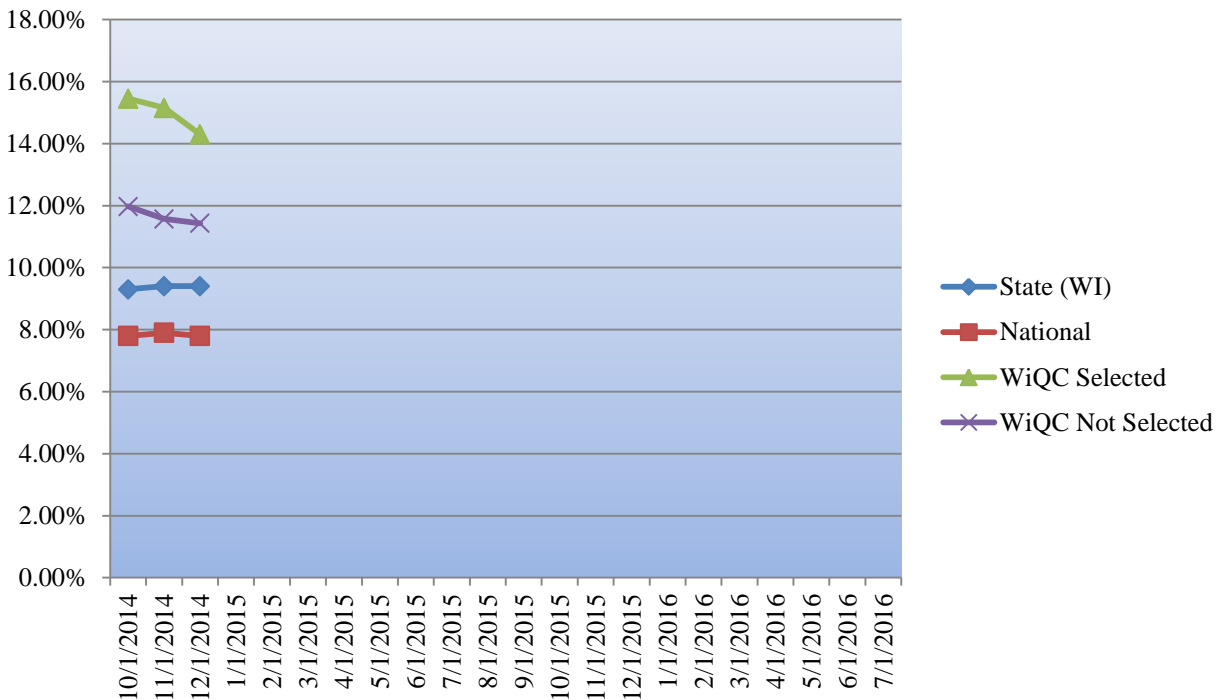
State- Data Source is CASPER REPORT

National- Data source is CASPER REPORT

WiQC (Not Selected) - Data source are CASPER reports and this group represents the WiQC members that did not select pressure ulcers as a focus in their facility.

WiQC Selected- Data source are CASPER reports and this group represents the WiQC members that did select pressure ulcers as a focus in their facility.

Pain Benchmarks



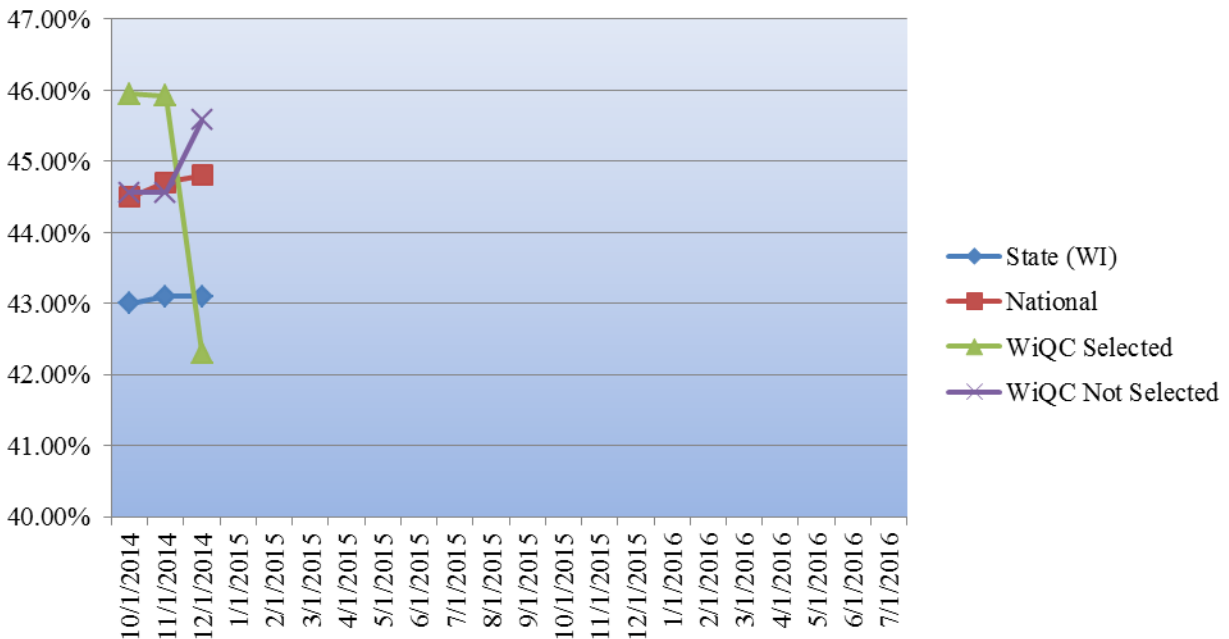
Date	State (WI)	National	WiQC Selected	WiQC Not Selected
10/31/2014	9.30%	7.80%	15.45%	11.97%
11/30/2014	9.40%	7.90%	15.15%	11.57%
12/31/2014	9.40%	7.80%	14.30%	11.43%

Description: This measure reports the percentage of long stay residents with at least one episode of moderate/severe pain, or horrible excruciating pain of any frequency in the last 5 days.

Numerator- Long-stay residents in almost constant or frequency pain and at least one episode of moderate to severe pain OR resident reports very severe/horrible pain of any frequency.

Denominator- All long-stay nursing home residents with target assessment except those with exclusions.

Bladder or Bowel Inct Benchmarks

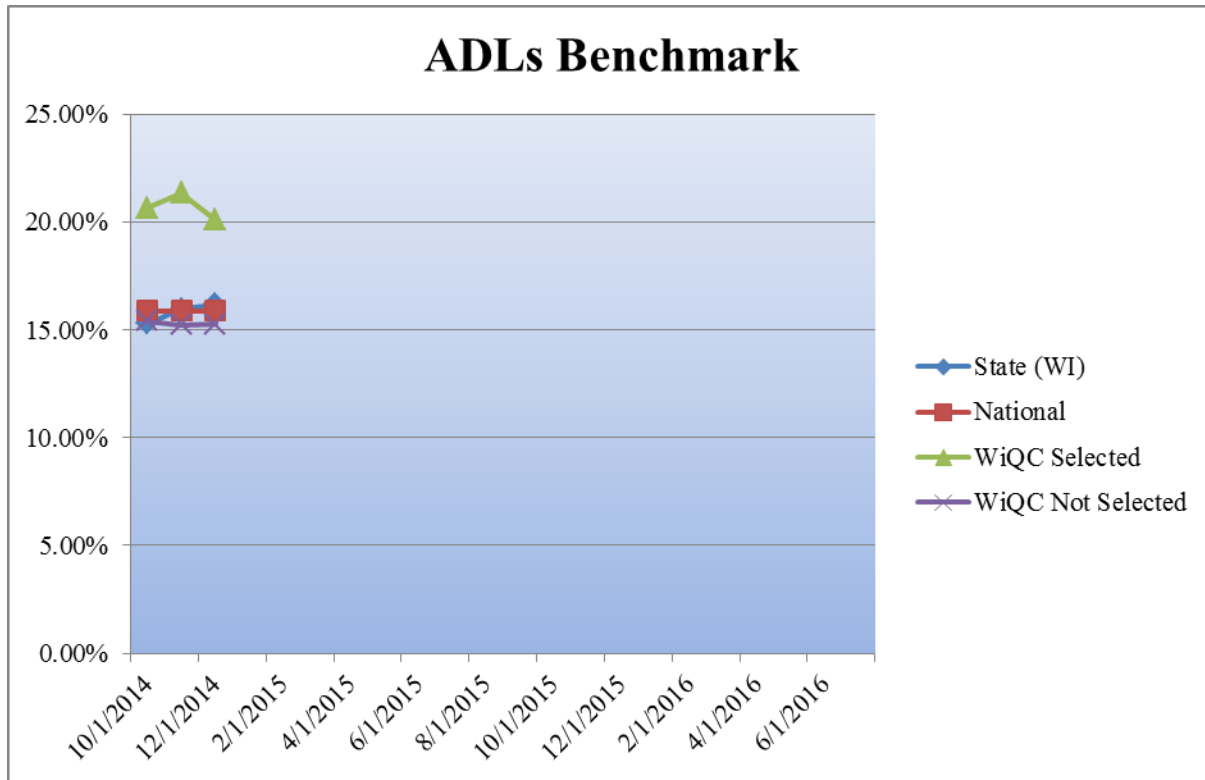


Date	State (WI)	National	WiQC Selected	WiQC Not Selected
10/31/2014	43.00%	44.50%	45.95%	44.56%
11/30/2014	43.10%	44.70%	45.92%	44.56%
12/31/2014	43.10%	44.80%	42.31%	45.58%

Description: This measure reports the percentage of long-stay residents who frequently lose control of their bowel or bladder during the 7-day look back period preceding the MDS 3.0 target assessment date.

Numerator- Long-stay residents that answered 2 or 3 for the Urinary continence OR bowel continence in H0300 and H0400 (respectively) on the MDS assessment.

Denominator- All long-stay nursing home residents with one or more look back scans of MDS assessments except those with exclusions.



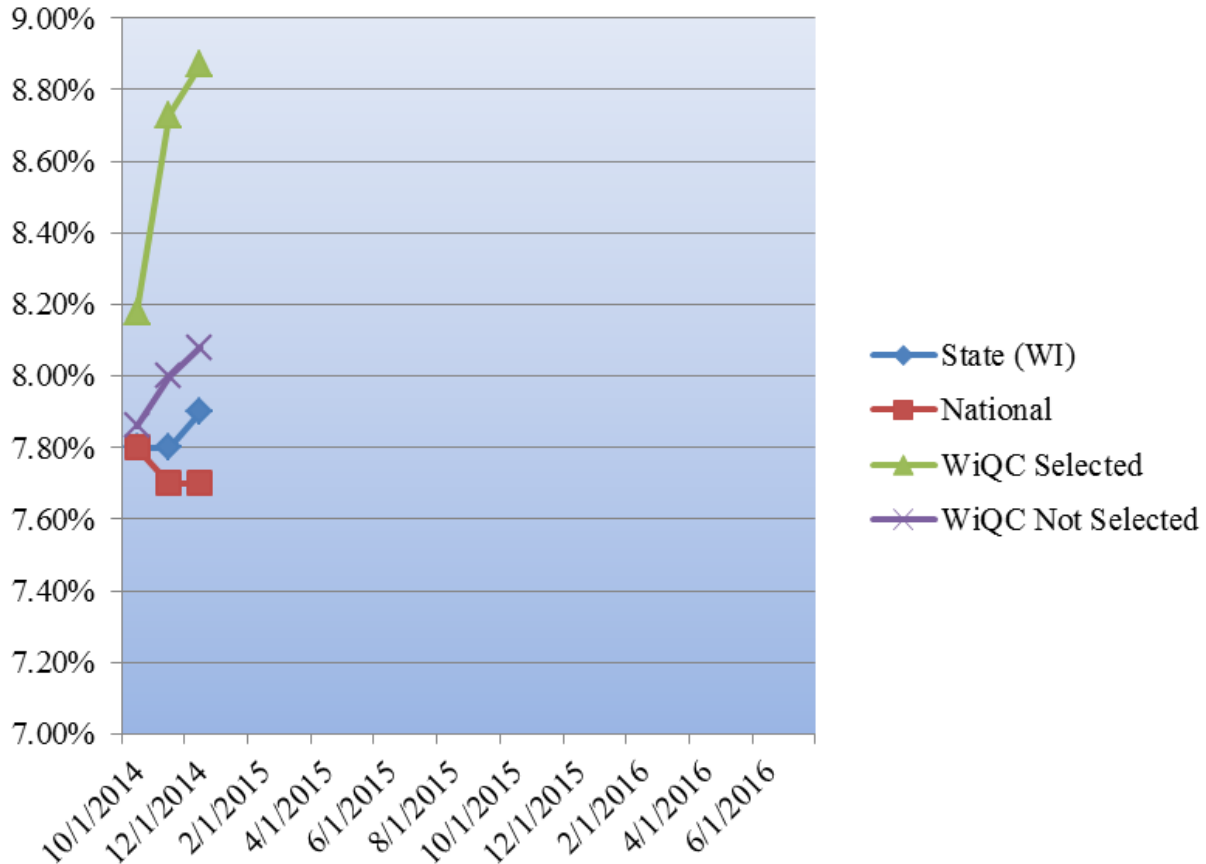
Date	State (WI)	National	WiQC Selected	WiQC Not Selected
10/31/2014	15.30%	15.90%	20.70%	15.43%
11/30/2014	16.00%	15.90%	21.37%	15.26%
12/31/2014	16.20%	15.90%	20.12%	15.28%

Description: This measure reports the percentage of long-stay residents whose need for help with late-loss ADLs has increased when compared to the prior assessment.

Numerator- Long-stay residents with at least TWO of the following being true; a. bed mobility has at least one point increase in coding points, b. transfer has at least a one point increase in coding points, c. eating has at least a two point increase in coding points, d. toileting has at least a one point increase in coding points OR at least ONE of the following is true compared to the prior assessment; a. bed mobility has at least a two point increase in coding points, b. transfer has at least a two point increase in coding points, c. eating has at least a two point increase in coding points, d. toileting has at least a two point increase in coding points.

Denominator- All long-stay nursing home residents with one a selected target and prior assessment except those with exclusions.

Excess Weight Loss Benchmarks



Date	State (WI)	National	WiQC Selected	WiQC Not Selected
10/31/2014	7.80%	7.80%	8.18%	7.86%
11/30/2014	7.80%	7.70%	8.73%	8.00%
12/31/2014	7.90%	7.70%	8.87%	8.08%

Description: This measure reports the percentage of long-stay residents who had a weight loss of 5% or more in the last month or 10% or more in the last two quarters who are not on a physician prescribed weight loss regimen noted in an MDS assessment during the selected quarter.

Numerator- Long-stay residents coded as a 2 or MDS K0300.

Denominator- All long-stay nursing home residents with a selected target assessment except those with exclusions.